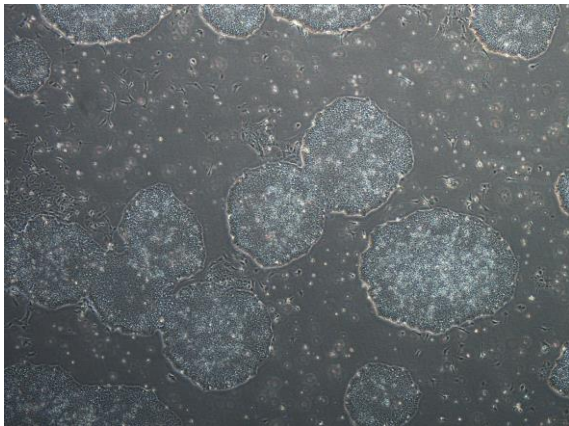
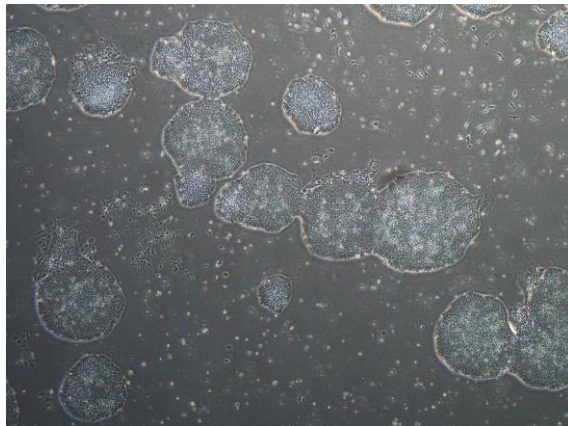


【 CiRA-j-1130 】 Morphology of iPSC colonies

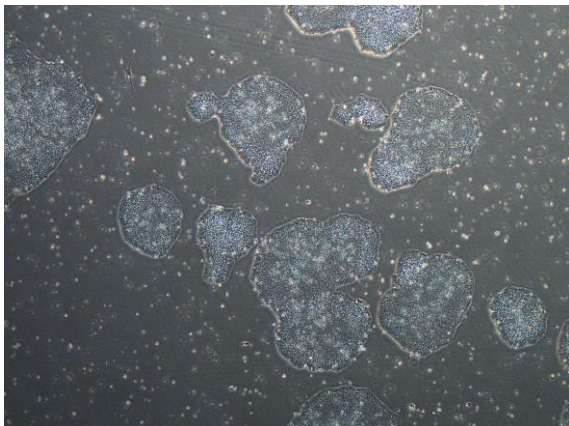
CiRA-j-1130-A: passage-3



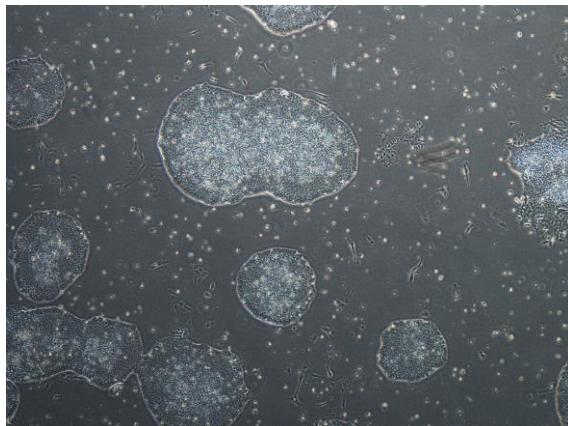
CiRA-j-1130-B: passage-3



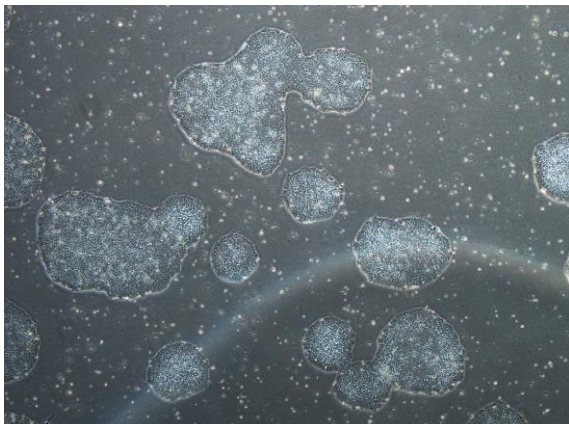
CiRA-j-1130-C: passage-3



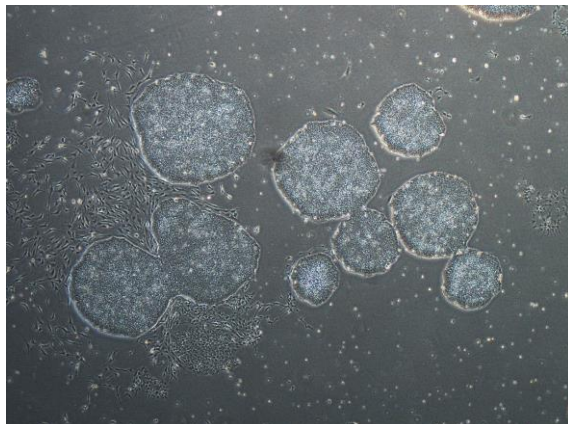
CiRA-j-1130-D: passage-3



CiRA-j-1130-E: passage-3



CiRA-j-1130-F: passage-3



(All images were captured at 4x magnification)